

# Messenger

April 2015

St. Johns Lutheran Church  
3738 Morgan Ford Rd  
St. Louis, MO 63116  
314-773-0126

[stjohnslcstl@gmail.com](mailto:stjohnslcstl@gmail.com)  
[stjohnslutheranstlouis.org](http://stjohnslutheranstlouis.org)

## Pastors Desk



Well March Madness is almost over. So how does your brackets fair? The teams you picked for the final four are they in the tournament? My favorite is still in contention. Michigan State made it! Go Spartans! The final four have been selected or their spot secured by great plays, step-up players, lousy turnovers, final shots and lucky bounces, missed free-throws, time clocks, great effort, superb coaching, made free throws,



blown execution of plays, time out strategies, and poor field-goal percentages. Some teams have shined while others have not. Some overwhelmed their opponents and other teams played every point to the end. Then there are the players who are making a name for themselves as the tournament

continues. But there is one team all are watching. They are undefeated... so far... they are in the final four...they are selected and expected to win the tournament. They are getting close to the perfect season, with two games left and some impressive team players. We will find out Monday, April 6.

As we approach April our attention is placed on another team player who has lived a perfect life but his team hasn't. April madness is about to begin, The crowds have picked their favorite to win. (at least on Sunday) The cheers go out to Jesus and his team of disciples. Of course there are the jeers from the near perfect players who have followed the rules and have played the game longer and better than anyone else. They expect to win. So they have said. They are plotting how to defeat him as you read this article. It madness, one of Jesus own teammates has betrayed Him, soldiers in the night have taken Him away. Crowds now cheer on an opponent, a criminal named Barabbas. Jesus is beaten down by Roman soldiers. They say he is hurt, no one expects him to play in the final game of Passover and come out a winner. His teammates have abandoned him. This is April Madness!

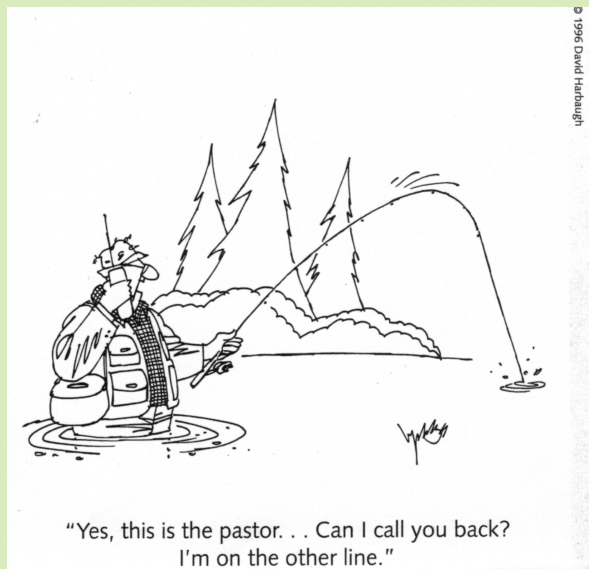


Who have you picked to win the game of life? How do your brackets fair? Are you still cheering for Jesus? Are you still in the tournament and a fan of Christ? There are only two teams left to play out the deciding game the Christians and the world. Some think the odds are in favor of the world to win. It may seem that

Continued on page 2

way, it sure did that first Good Friday when darkness would overcome light. We will find out on Sunday, April 5<sup>th</sup>. Be there for the game (of life)! You have been recruited to play.

*One thief on the cross was saved, that none should despair: and only one, that none should presume. J. C. Ryle*



## Easter Breakfast

Avoid the Easter crowds and high prices at the restaurants and join us for breakfast!

9:00am-10:00am

Free-will offering.

Prepared by our Youth and Jerry Foster!

### Tre Ore Service

Come **Friday, April 3**, from 12:00-3:00pm at St. Johns, along with seven south city Lutheran churches, as we meditate on the Seven Words of Jesus from the Cross. If you are unable to attend please follow along on AM850 KFUE. The bulletin can be found on our website, [stjohnslutheranstpaul.org](http://stjohnslutheranstpaul.org)

## THE PARABLES OF LENT

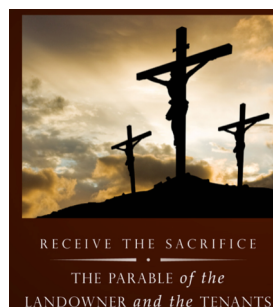
A SERIES OF SERVICES for the SEASON OF LENT

Join us as we conclude the Parables of Lent during Holy Week.



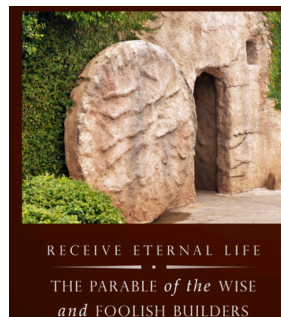
### Maundy Thursday Service 7:00pm Thursday, April 2

*Maundy Thursday service is based on the parable of the Great Banquet. In this parable, those in low positions are invited to a place of honor by the host. We who are humbled by our sins and outcast by the world are welcomed by Christ to dine at his Holy Supper.*



### Good Friday Service 7:00pm Friday, April 3

*Good Friday service is based on the parable of the Landowner and the Tenants. In this parable tenants in a vineyard kill the son the master sent to gather the harvest. We are reminded in this service that the Son of God is killed that we might receive the kingdom.*



### Easter Sunday Worship

7:45am & 10:30am Sunday, April 5

*Easter Sunday service is based on the parable of the Wise and Foolish Builders. In this parable, when a storm hits, the house built on the rock remains while one built on sand is washed away. We are reminded on Easter that we build our lives on Christ the Cornerstone.*



## DON'T LET SMART BUGS OUTSMART YOU

Alert! Creatures on the loose everywhere, lurking on grocery carts, sinks, doorknobs and hands. They're smart, sneaky and stealthy survivalists. They're bacteria and it's getting harder every day to knock them out.

These organisms are so smart and do such a good job of adapting to new environments. They develop resistance to antibiotics and share the information with each other.

More infection-causing bacteria, like those that cause everything from ear infections to pneumonia to staph infections, are growing resistant to antibiotics every day. That means the next time you take antibiotics they may not be up to the job and your infection could get dangerously worse.

Some of this is happening because patients don't take their antibiotics correctly. If you only take antibiotics for a few days without finishing it all, you just kill the most sensitive bacteria. The hardy ones are left to grow and multiply. Meanwhile, you may get sick again or pass this new resistant strain of bacteria to someone else.

## TIPS TO KEEP GERMS AT BAY

Wash your hands frequently. Any soap is fine-most bacteria are removed through friction and water.

Keep hand-sanitizing gels in your purse and car for you and your kids when a sink isn't available-like after grocery shopping, romping on playground equipment, or visiting a petting zoo,

Keep immune system healthy with a nutritious diet and adequate sleep and exercise.

Get a flu shot-people die of flu-related complications, like pneumonia.



*May the Lord strengthen our bodies, minds and spirit for His service to the good of others.*

*If you have any medical problems or questions call the church office or Maureen Rehmer at 352-6266.*

*Blood pressures are taken on the third Sunday of the month at 8:45 A.M. and 10:15 A.M. However, if you need your blood pressure taken more often, please contact Maureen.*



## St. Johns Lutheran Church



**Saturday, April 11, 2015  
11:00 AM to 4:00 PM**

Menu will include

1 Piece Hot Dog Sandwich	\$3.00
2 Piece Hot Dog Dinner	\$5.00
1 Piece Bratwurst Sandwich	\$3.50
2 Piece Bratwurst Dinner	\$7.00
½ Pork Steak Sandwich	\$5.50
Pork Steak Dinner	\$8.50
¼ Chicken Sandwich	\$5.50
½ Chicken Dinner	\$8.50
½ Rack of Ribs Dinner	\$10.00
Rack of Ribs Dinner	\$18.50

Dinners Include Dessert, Bread  
and a choice of two sides  
(Potato Salad, Slaw or Baked Beans).

Delivery Available For Four Or More Orders

Any questions or Advance orders call Craig Goebel  
314-302-4771

Email orders to [stjohnslcstl@gmail.com](mailto:stjohnslcstl@gmail.com) by April 9,  
2015 or fax Order to 314-772-7252.

To order on the day of the barbecue call (314) 773-  
0126

Sponsored by the members of St. Johns Lutheran  
Church Ushers.

## Pre-Owned Treasure Sale & Bake Sale



**Saturday, April 11  
9:00AM to 2:00PM**

**Fellowship Hall**

**Co-Sponsored by Thrivent  
Chapter 30663  
Funds received designated for  
St. Johns Food Pantry**



**South St. Louis  
Thrivent  
Chapter Picnic  
Saturday, May 23, 2015  
Lemay Park**

(Military Avenue and Fannie Road off Lemay Ferry)  
**11:00 a.m. to 2:30 p.m.**

All families in South St. Louis, Mo. Thrivent Chapter #30663 are invited to come for food, fun and fellowship. Come early to play games or enjoy the playground and park. All food and drink provided Lunch will be served at 12:00 Noon  
Intergenerational - all ages welcome Attendance prizes awarded Main Shelter - Lots of space - Rain or Shine  
Bring canned goods for Feed My People Please - RSVP by May 16, 2015 Contact: Fred Blank (314-487-0480) with # attending  
Or Email: [blankfredlaverne@aol.com](mailto:blankfredlaverne@aol.com)





## Social Ministry

A big thank you to everyone assisting with the Treasure and Bake Sale as the food pantry will be receiving matching funds from Thrivent Financial For Lutherans. Therefore, we are asking you to support these fundraisers.



Many people need assistance with clothing and food. Therefore, your continued support is needed.

*In His goodness, God furnishes all our needs for body and soul: food, shelter, clothing and church. Psalm 107:1 "Oh give thanks to the Lord, for He is good, for His steadfast love endures forever!"*

## STEWARDSHIP *making a difference*

### RESURRECTION SHOWS NEW LIFE

As this resurrection shows the new life that awaits us, take time to think how you can use your time, talents, and money as a way to live the life that awaits us. Take time to think how you can use your time, talents, and money as a way to live that new life in Jesus. Use your time, talents, and money to glorify God. Jesus died that we can have repentance and new life. May you have a blessed Easter.



## Evangelism

An Internet search of where the tradition of the Easter lily began led to this:

**The Easter Lily.** For many, the beautiful trumpet-shaped white flowers symbolize purity, virtue, innocence, hope and life—the spiritual essence of Easter. History, mythology, literature, poetry and the world of art are rife with stories and images that speak of the beauty and majesty of the elegant white flowers. Often called the “white-robed apostles of hope,” lilies were found growing in the Garden of Gethsemane after Christ’s agony. Tradition has it that the beautiful white lilies sprung up where drops of Christ’s sweat fell to the ground in his final hours of sorrow and deep distress. Churches continue this tradition at Easter time by banking their altars and surrounding their crosses with masses of Easter Lilies, to commemorate the resurrection of Jesus Christ and hope of life everlasting.

The following poem by Louise Lewin Matthews captures the spiritual essence of the Easter Lily:



*Easter morn with lilies fair  
Fills the church with perfumes rare,  
As their clouds of incense rise,  
Sweetest offerings to the skies.  
Stately lilies pure and white  
Flooding darkness with their light,  
Bloom and sorrow drifts away,  
On this holy hallow'd day.  
Easter Lilies bending low  
in the golden afterglow,  
Bear a message from the sod  
To the heavenly towers of God.*

-Louise Lewin Matthews

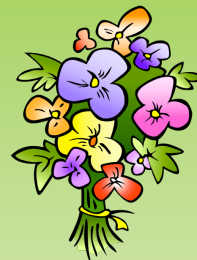
So there you have it. This Easter season, share the joy of Jesus' resurrection with those who don't have a close relationship with God and are missing out on the meaning of Easter.

Please consider sending Birthday Cards to our Homebound members

John Hobson  
1373 D'Adrian Professional Park  
Godfrey, IL 62035

Dennis Solomon  
100 Woodland Ct. Rm 203  
Arnold, MO 63010

*Happy Birthday*



## 2015 Meetings

### Voters

April 19  
June 14  
September 13  
November 1  
December 13

### Executive Council

May 17  
July 19  
October 4  
December 13

4/2 Cameron Hampel  
4/2 Ruth Trauth  
4/3 Craig Goebel  
4/4 Sarah Holdenried  
4/9 Karl Frerichs  
4/13 Lynne Foster  
4/14 Cindy Geiger  
4/20 Tylor Bohannon  
4/21 John Hobson  
4/25 Joan Potvin  
4/25 Dennis Solomon

◀ Mar 2015		~ April 2015 ~					May 2015 ▶
Sun	Mon	Tue	Wed	Thu	Fri	Sat	
			1 8:00am Eagle Coffee 2:00pm Compass 7:00pm Confirmation w/parents at Epiphany	2 2:00pm Home Bible Study 3:30pm Compass 6:30pm ESOL 7:00pm Maundy Thursday Service	3 8:00am Bible Study 12:00-3:00pm Treo Ore Service 7:00pm Good Friday Service	4 8:00am Social Ministry 8:30am Food Pantry	
5 <b>Easter Sunday</b> 7:45am Sunday Worship 9:00am Easter Breakfast 10:30 am Sunday Worship	6 3:30pm Compass 7:00pm Elders	7 8:15am Nepalese Bible Study 1:30pm Home Bible Study 3:30pm Compass	8 10:30am Avalon Bible Study 2:00pm Compass 5:00pm Confirmation	9 2:00pm Home Bible Study 3:30pm Compass 5:30pm AIC 6:30pm ESOL	10 8:00am Bible Study 3:30pm Compass 6:00pm BBQ set up	11 8:30am Food Pantry 9:00am-2:00pm Treasure & Bake Sale 11:00am-4:00pm BBQ	
12 7:45am Sunday Worship w/ Communion 9:15am Bible Class 10:30am Sunday Worship w/ Communion	13 3:30pm Compass 7:00pm WOW	14 8:15am Nepalese Bible Study 1:30pm Home Bible Study 3:30pm Compass 7:00pm Serve Boldly	15 2:00pm Compass 5:00pm Confirmation	16 2:00pm Home Bible Study 3:30pm Compass 6:30pm ESOL	17 8:00am Bible Study 3:30pm Compass 7:00pm Lost & Found Concert	18 8:30am Food Pantry	
19 8:45& 10:15am BP Check 7:45am Sunday Worship 9:15 Bible Class 10:30 am Sunday Worship 12:00pm Voters	20 3:30pm Compass 6:30pm Evangelism	21 8:15am Nepalese Bible Study 1:30pm Home Bible Study 3:30pm Compass 6:00pm Lutheran Foundation Delegate Mtg	22 2:00pm Compass 5:00pm Confirmation	23 2:00pm Home Bible Study 3:30pm Compass 6:30pm ESOL	24 8:00am Bible Study 3:30pm Compass	25 8:30am Food Pantry	
26 7:45am Sunday Worship w/ Communion 9:15am Bible Class 10:30am Sunday Worship w/ Communion	27 3:30pm Compass 7:00pm Ushers	28 8:15am Nepalese Bible Study 1:30pm Home Bible Study 3:30pm Compass	29 2:00pm Compass 5:00pm Confirmation	30 2:00pm Home Bible Study 3:30pm Compass 3:30pm Call Service for Field Workers 6:30pm ESOL	<b>Notes:</b> <b>Join us for Coffee and Donuts on Sundays before Bible Class!!!</b>		